



# ARDEN

## COACH AND TRUCK WHEEL DISCS

Arden Continental Car Accessory Co. Ltd.,  
427 Warwick Road, Greet, Birmingham B11 2JF

021 706 4254 & 5471/2

# ANODISED ALUMINIUM



14" ALUMINIUM FRONT



16" ALUMINIUM FRONT



17" ALUMINIUM FRONT



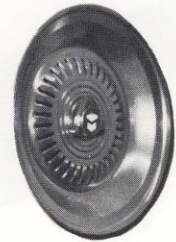
20" ALUMINIUM FRONT



22.5" ALUMINIUM FRONT



14" ALUMINIUM REAR



16" ALUMINIUM REAR



20" ALUMINIUM REAR

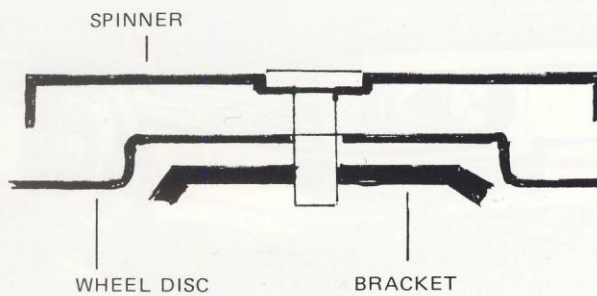


20" H.R. ALUMINIUM REAR



22.5" ALUMINIUM REAR

BRACKET  
FIXING SINGLE BOLT  
ALUMINIUM WHEEL DISC



# STAINLESS STEEL



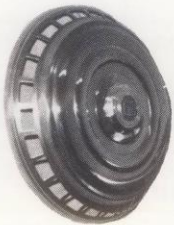
14" S/S FRONT



17.5" S/S FRONT



17" S/S FRONT



19" S/S FRONT



22.5" S/S FRONT



14" S/S REAR



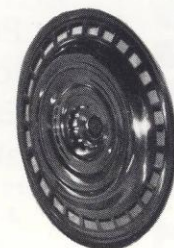
16" S/S REAR



17.5" S/S REAR



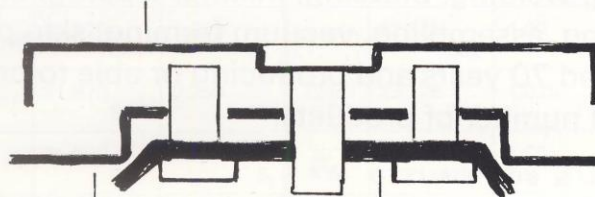
20" S/S H.R. REAR



22.5" S/S REAR

BRACKET FIXING  
TWO BOLT  
STAINLESS STEEL WHEEL DISC

SPINNER



WHEEL DISC

BRACKET

# OTHER TYPES



14" D. ALUMINIUM FRONT



20" SUPER SLOT



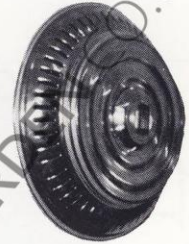
20" K.W., S/S FRONT



20" S/S, E/S FRONT



20" EURO FRONT



16.5" ALUMINIUM FRONT



20" SUPER SLOT



20" K.W., S/S REAR



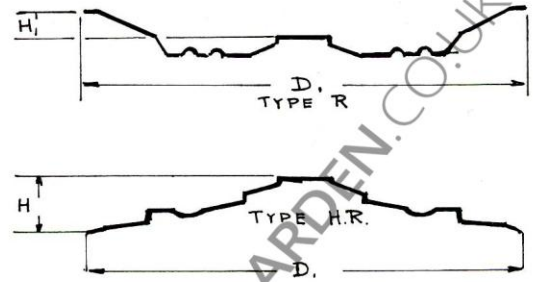
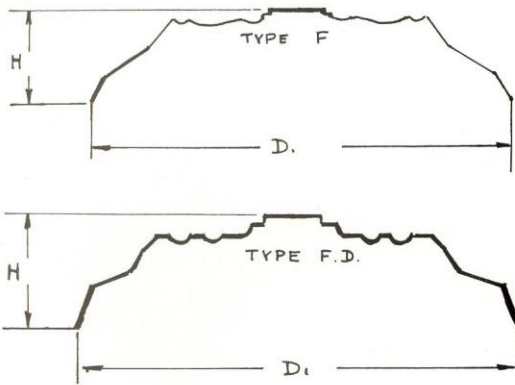
20" S/S, E/S REAR



20" S/S, EURO REAR

ALL CENTRE SPINNERS ARE MADE IN STAINLESS STEEL

BRACKETS ARE MILD STEEL

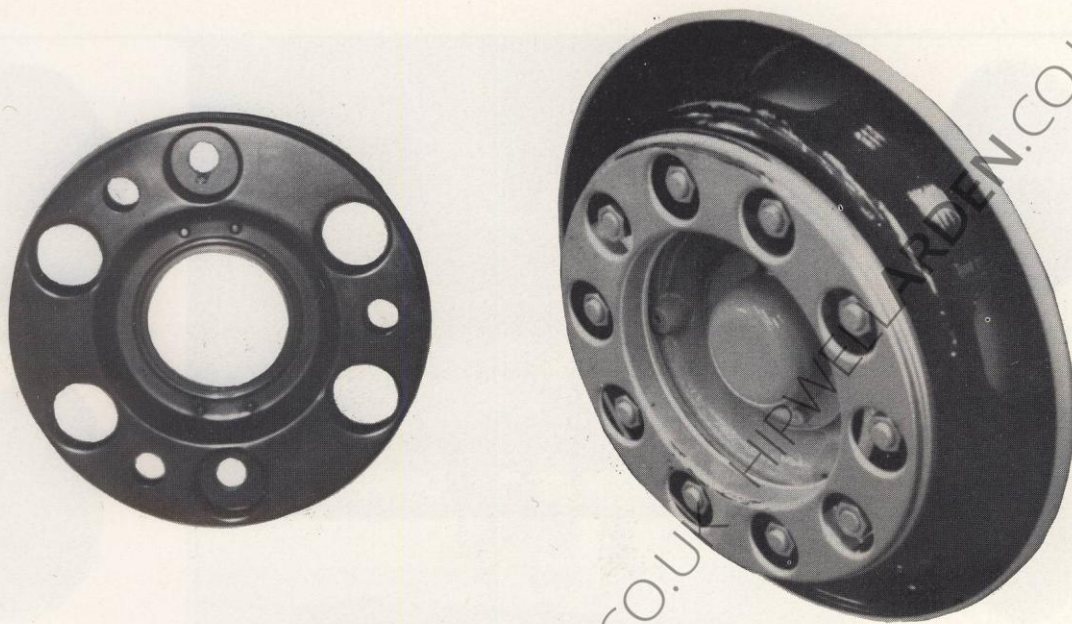


REF. F. Front Wheel Disc R. Rear Wheel Disc A.A. Anodised Aluminium H. Height  
 D.F. Deep Front Wheel Disc H.R. Hub Reduction Rear Wheel Disc S.S. Stainless Steel Di. Diameter

## APPROXIMATE DIMENSIONS

Wheel Size	Anodised Aluminium Front		Wheel Size	Anodised Aluminium Rear		Wheel Size	Stainless Steel Front		Wheel Size	Stainless Steel Rear	
	Diameter Di	Height H		Di	H		Di	H		Di	H
14"	14.625" 372	3.250" 82	14"	14.500 370	0.250 5	14"	13.750 350	3.500 90	14"	14.00" 357	2.00" 52
14"D	14.125 359	3.375 85				14"D					
15"	15.250 385	2.375 60	15"	15.250 385	2.375 60	15"	15.250 385	2.375 60	15"	15.250 385	2.375 60
16"	17.125 435	3.375 85	16"	17.00 430	1.250 30	16"	17.125 435	3.375 88	16"	17.00 430	1.50 37
16.5"	16.625 423	3.250 83	16.5"	16.500 420	1.750 46	16.5"	16.625 423	3.250 83	16.5"	16.50 420	1.750 46
17"	18.50 470	3.250 82	17"	18.250 463	1.750 46	17"	18.625 473	4.375 112	17"	18.125 460	1.625 41
17.5"	17.375 443	4.50 113	17.5"	17.375 442	1.500 40	17.5"	17.50 444	4.250 108	17.5"	17.50 445	1.625 43
18"	19.00 482	4.375 112	18"	19.50 496	1.500 39	18"	19.00 482	4.375 112	18"	19.50 496	1.500 39
19"	19.50 495	3.875 99	19"			19"	19.500 495	3.875 99	19"		
20"	21.750 553	3.750 95	20"	21.125 537	1.500 38	20"	21.375 542	3.750 97	20"	21.50 547	1.625 42
20"D	21.875 556	4.375 112	20"HR	21.250 540	1.875 47	20"D	21.375 544	4.50 115	20"HR	21.375 544	2.50 65
22.5"	22.125 559	3.625 94	22.5"	22.00 558	1.250 33	22.5"	21.875 555	3.525 92	22.5"	22.125 562	2.00 50
22.5"D	22.250 565	4.250 110	22.5"HR	21.875 555	1.625 42	22.5"D	22.125 562	4.00 102	22.5"HR	22.125 562	3.00 75
22.5"			22.5"F	21.875 555	0.250 5	22.5"DD	22.125 562	4.625 120			
20"KW	21.375 544	4.50 113	20"F	21.250 541	0.250 5	20"KW	21.375 544	4.50 113	20"KW	21.375 543	2.125 53
22"	23.375 593	4.250 110	22"F	23.375 593	0.250 5	16"H	16.875 430	3.125 80			

## WHEEL NUT COVERS



TYPE	SIZE inches	SIZE m.m.
No. 1.....	13 <sup>3</sup> / <sub>16</sub>	335
No. 2.....	10 <sup>13</sup> / <sub>16</sub>	275
No. 3.....	8 <sup>1</sup> / <sub>16</sub>	205
No. 4.....	6 <sup>5</sup> / <sub>8</sub>	170

*Available in:-*

POLISHED STAINLESS STEEL  
SATIN STAINLESS STEEL  
MILD STEEL WITH VARIOUS  
FINISHES TO ORDER.

*Other Accessories available not illustrated:-*

LAMP BARS  
MIRRORS  
TAIL PIPE TRIMS  
GRAB HANDLES  
STONE GUARDS

*Manufactured by:*

**ARDEN CONTINENTAL CAR ACCESSORY CO. LIMITED**

427 WARWICK ROAD, GREET, BIRMINGHAM B11 2JR

Telephone No.: 021-706 4254-5471/2

Registered in England 660 431